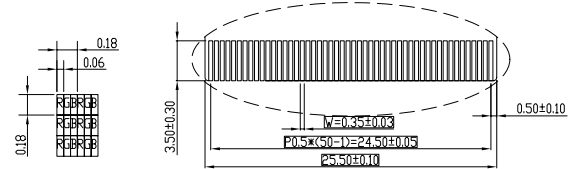
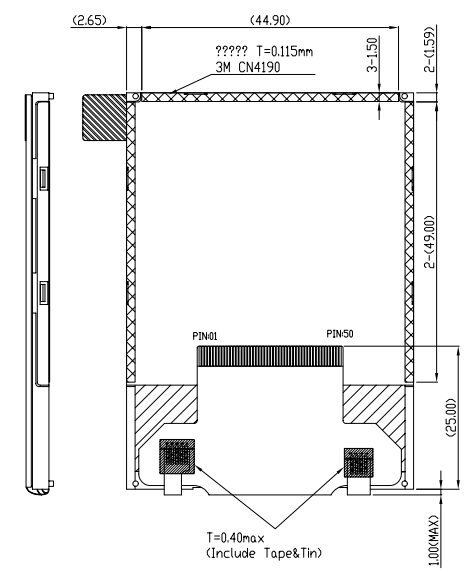
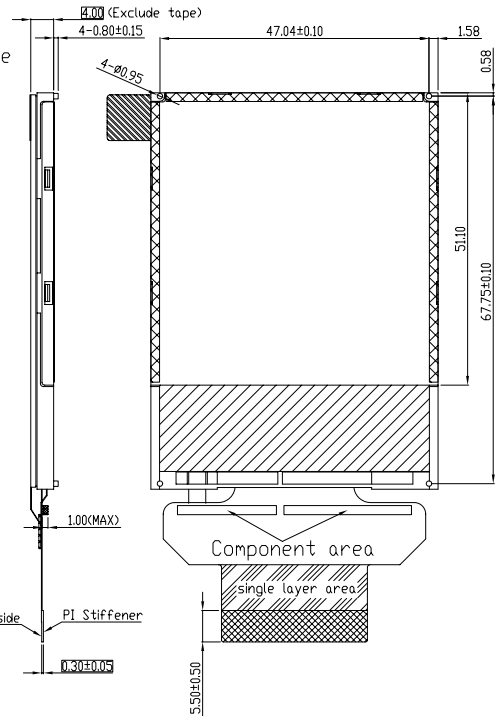
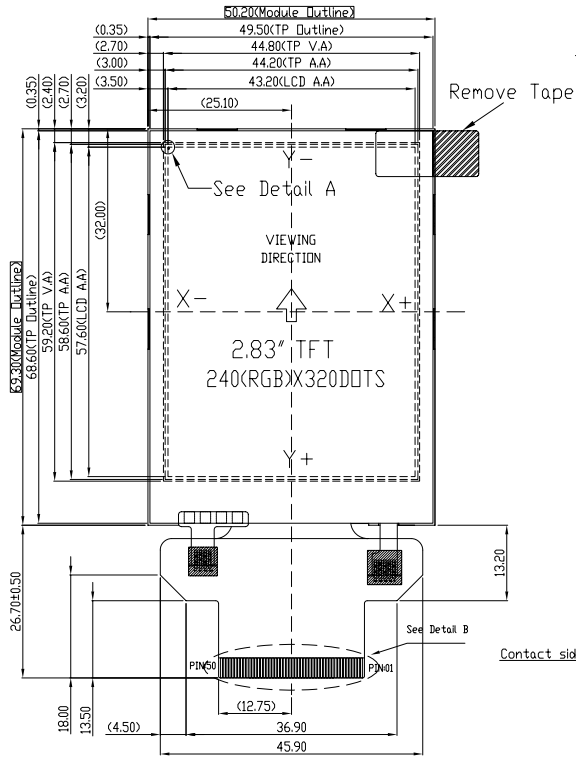
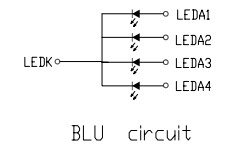
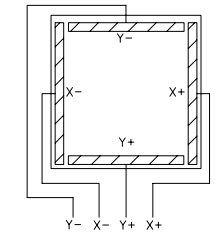




1	LEDK
2	LEDA1
3	LEDA2
4	LEDA3
5	LEDA4
6	IM0
7	IM1
8	IM2
9	IM3
10	RESET
11	VSNC
12	HSNC
13	DOTCLK
14	DE
15	DB17
16	DB16
17	DB15
18	DB14
19	DB13
20	DB12
21	DB11
22	DB10
23	DB9
24	DB8
25	DB7
26	DB6
27	DB5
28	DB4
29	DB3
30	DB2
31	DB1
32	DB0
33	SD0
34	SD1
35	RD
36	MAX(D/CX)
37	D/CX(SCL)
38	CSX
39	TE
40	VODI
41	VODI
42	VCI
43	GND
44	X+
45	Y+
46	X-
47	Y-
48	GND
49	GND
50	GND



Detail A Scale 20:1
Detail B Scale 2:1



- NOTES:
1. DISPLAY TYPE: TFT
 2. VIEWING DIRECTION: 6:00
 3. POLARIZER MODE: TRANSMISSIVE/POSITIVE
 4. DRIVE METHOD: 1/320 DUTY
 5. 10VCC=2.8V (TYP), VCC=2.8V, VCI=2.8V
 6. OPERATING TEMP: -20° C — +70° C
 7. STORAGE TEMP: -30° C — +80° C
 8. LCD DRIVE IC: IL19341V
 9. CONNECTION: FPC
 10. BACKLIGHT: 4CHIP-WHITE LED/80mA/3.2V (TYP)
 11. UNMARKED TOLERANCE: ±0.20
 12. REQUIREMENTS ON ENVIRONMENTAL PROTECTION: RoHS
 13. THE CONTROLLED DIMENSION MASK TO BE ()
 14. REFERENCE DIMENSTON MASK TO BE ()

MIT MULTI-INNO TECHNOLOGY CO.,LTD.

DRAWN BY:	CAROL 2015.12.22	SCALE : 1/1	MODULE P/N:
CHECKED BY:		UNIT:	MI0283QT-11
APPROVED BY:		mm	DESCRIPTION:
VER.	REVISED DESCRIPTION	DATE	TFT MODULE

02	Update IC driver from IL19341 to IL19341V.	2015.12.22
01	First issue	2011.06.22
02		