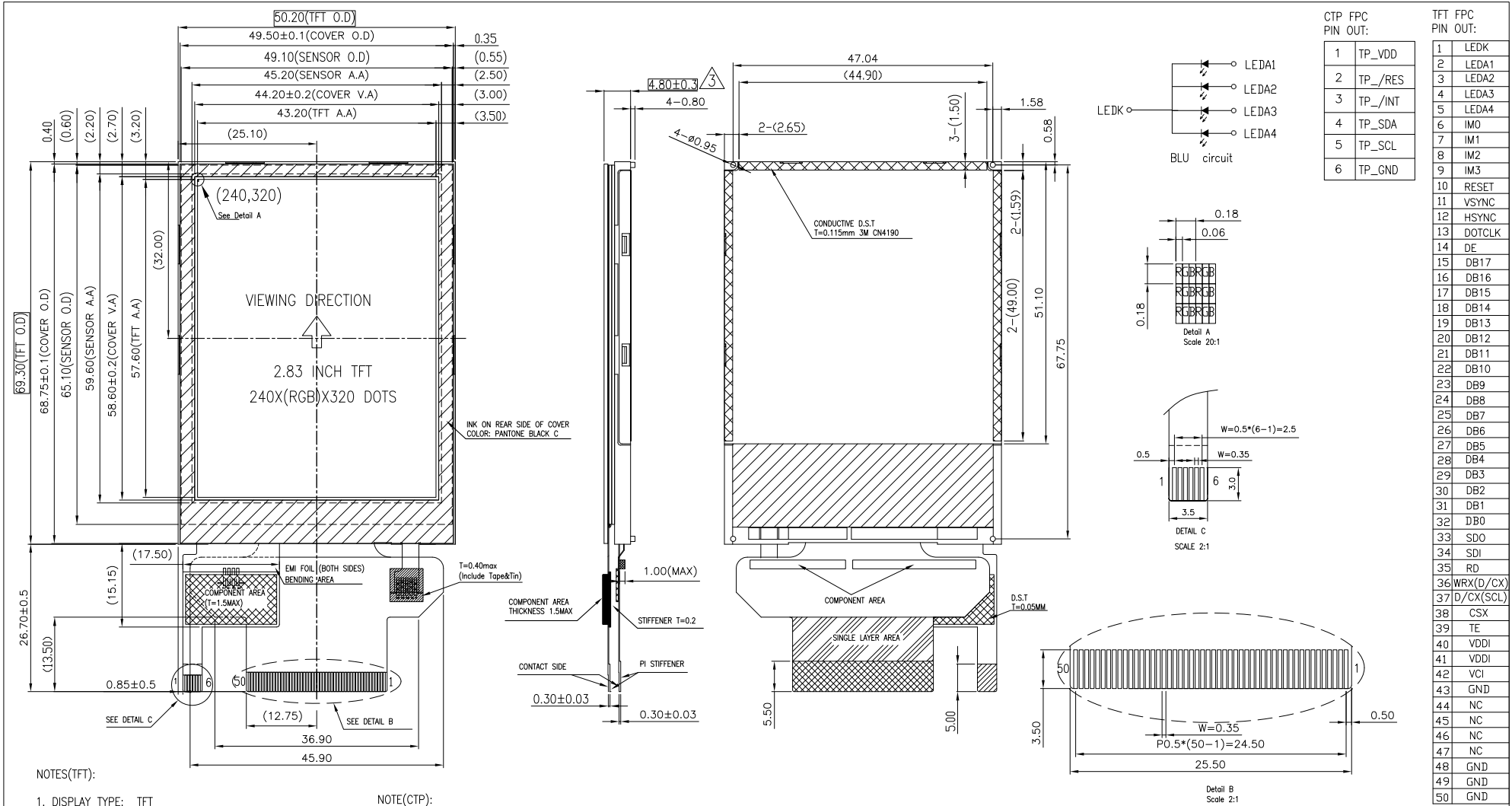




MODULE NO.: MI0283QT-17CP1

Ver 1.3



CTP FPC PIN OUT:		TFT FPC PIN OUT:	
1	TP_VDD	1	LEDK
2	TP_/RES	2	LEDA1
3	TP_/INT	3	LEDA2
4	TP_SDA	4	LEDA3
5	TP_SCL	5	LEDA4
6	TP_GND	6	IM0
		7	IM1
		8	IM2
		9	IM3
		10	RESET
		11	VSYNC
		12	HSYNC
		13	DOTCLK
		14	DE
		15	DB17
		16	DB16
		17	DB15
		18	DB14
		19	DB13
		20	DB12
		21	DB11
		22	DB10
		23	DB9
		24	DB8
		25	DB7
		26	DB6
		27	DB5
		28	DB4
		29	DB3
		30	DB2
		31	DB1
		32	DB0
		33	S00
		34	SDI
		35	RD
		36	WRX(D/CX)
		37	D/CX(SCL)
		38	CSX
		39	TE
		40	VDDI
		41	VDDI
		42	VCI
		43	GND
		44	NC
		45	NC
		46	NC
		47	NC
		48	GND
		49	GND
		50	GND

NOTES(TFT):

- DISPLAY TYPE: TFT
- VIEWING DIRECTION: 6:00
- POLARIZER MODE: TRANSMISSIVE
- DRIVE METHOD: 1/320 DUTY
- VDDI=2.8V,VCI=2.8V
- OPERATING TEMP: -20°C -- +70°C
- STORAGE TEMP: -30°C -- +80°C
- LCD DRIVE IC: ILI9341V
- CONNECTION: FPC
- BACKLIGHT: 4CHIP-WHITE LED/80mA/3.2V(TYP)
- SURFACE LUMINANCE: 650 CD/M2(TYP.)(WITHOUT TP)
- UNMARKED TOLERANCE: ±0.20
- REQUIREMENTS ON ENVIRONMENTAL PROTECTION: RoHS
- THE CONTROLLED DIMENSION MASK TO BE ()
- REFERENCE DIMENSION MASK TO BE ()

NOTE(CTP):

- CAPACITIVE TOUCH PANEL;
- G/G, SINGLE-TOUCH+TWO-TOUCH GESTURE;
- IC DRIVER: FT6236U;
- SURFACE HARDNESS OF C/L:>=6H;
- INPUT VOLTAGE: 2.8V-3.3V;
- RESOLUTION: 240*320;
- I2C INTERFACE.



MULTI-INNO TECHNOLOGY CO.,LTD.

VER.	REVISED DESCRIPTION	REVISER	DATE	VERSION NO:	DRAWN BY:	CAROL	2017.06.22	SCALE : 1/1	MODULE P/N:
04	CTP IC CHANGE FROM FT6236GMA TO FT6236U.	CAROL	2017.06.22		CHECKED BY:			UNIT: mm	MI0283QT-17CP1
03	MODIFY THE THICKNESS OF GASKET AND TOTAL	RITA	2017.02.17		APPROVED BY:				
02	UPDATE IC DRIVER FORM ILI9341 TO ILI9341V.	VICTOR	2015.12.24						
01	FIRST ISSUE	VICTOR	2015.08.25						
VER.	REVISED DESCRIPTION	REVISER	DATE	VERSION NO:	04				TFT WITH CTP MODULE